



## KR TrayGuide

Protect your army with the best tray and case system by KR  
Custom create your own trays and case for your army using the KR tray system  
Choose from the widest range of custom trays

All pictures show trays relative to a standard sized KR Multicase (1 KRU), 1 standard KR Unit  
Pre-selected Sets (Custom)



### WH40K-TY-A

1 KRU  
Tyranids Set A holds:  
2 Carnifex, Hive Tyrant,  
54 Gaunts/ Gants/  
Genestealers  
(F3H, TY13)



### WH40K-TY-B

1 KRU  
Tyranids Set B holds:  
2x Trygon/ Mawloc, 54  
Gaunts/ Gants/  
Genestealers  
(F3H, TY7+TY7)



### WH40K-TY-C

1 KRU  
Tyranids Set C holds:  
2 Carnifex, Hive Tyrant, 6  
Warriors or Lictors  
(scything claws  
horizontal), 18 Gaunts/  
Gants/ Genestealers  
(F3H, TY13, TY4+TY4)



### WH40K-TY-D

1 KRU  
Tyranids Set D holds:  
2 Carnifex, Hive Tyrant,  
10 Gargoyles, 18  
Gaunts/ Gants/  
Genestealers  
(F3H, TY11, TY13)



### WH40K-TY-E

1 KRU  
Tyranids Set E holds:  
Winged Hive Tyrant  
(removable wings),  
Carnifex, 54 Gaunts/  
Gants/ Genestealers  
(F3H, TY14)

Pre-selected Sets (Core)



### WH40K-TY-G

1 KRU  
Tyranids Set G holds:  
2 Carnifex, Hive Tyrant,  
Old One Eye, 54 Gaunts/  
Gants/ Genestealers  
(F3H, V1H)



### WH40K-TY-H

1 KRU  
Tyranids Set H holds:  
Trygon, Carnifex, Hive  
Tyrant, 54 Gaunts/  
Gants/ Genestealers  
(F3H, V1H)



### WH40K-TY-I

1 KRU  
Tyranids Set I holds:  
6 Lictors/ Warriors, 2  
Biovore/ Pyrovore, 54  
Gaunts/ Gants/  
Genestealers  
(F3H, V2H)



### WH40K-TY-J

1 KRU  
Tyranids Set J holds:  
10 Hive Guard/ Tyrant  
Guard/ Broodlord, 3  
Death Leapers, 2  
Venomthropes, 54  
Gaunts/ Gants/  
Genestealers  
(D2H, F3H)



### WH40K-TY-K

1 KRU  
Tyranids Set K holds:  
Mawloc, Carnifex, Hive  
Tyrant, 54 Gaunts/  
Gants/ Genestealers  
(F3H, V1H)



### WH40K-TY-L

1 KRU  
Tyranids Set L holds:  
Trygon, 2 Carnifex, 54  
Gaunts/ Gants/  
Genestealers  
(F3H, V1H)

[www.krmulticase.com](http://www.krmulticase.com)

KR - soft foam for miniatures, hard cases for soft foam

© Copyright KaiserRushforth Ltd 2004-2016 All rights reserved, see website for details: [www.krmulticase.co.uk](http://www.krmulticase.co.uk) [www.krmulticase.com](http://www.krmulticase.com) [www.krmulticase.eu](http://www.krmulticase.eu)





## KR TrayGuide

Protect your army with the best tray and case system by KR  
Custom create your own trays and case for your army using the KR tray system  
Choose from the widest range of custom trays

All pictures show trays relative to a standard sized KR Multicase (1 KRU), 1 standard KR Unit

### Mix & Match Trays (Custom)

Where mix & match trays are available simply use 2 equal height sections to create 1 tray. See each section for suggestions  
51 mm deep tray compartments



#### TY1

1/2 depth tray - 51mm deep

Holds; Tyranids 4  
Biovore / Pyrovore /  
Broodlord / Hive Guard /  
Zoanthrope, or 2 plus 2  
Death Leaper



#### TY2

1/2 depth tray - 51mm deep

Holds; Tyranids 2  
Biovore / Pyrovore /  
Broodlord / Hive Guard /  
Zoanthrope, 2 Tyrant  
Guard, 1 Deathleaper  
(compartments variable  
to suit various combos)



#### TY3

1/2 depth tray - 51mm deep

Holds; Tyranids 2  
Zoanthrope, 1  
Venomthrope



#### Suggestion:

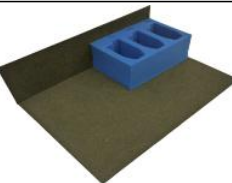
##### TY2+TY2

1/2 depth tray - 51mm deep

Holds; Tyranids 4  
Biovore / Pyrovore /  
Broodlord / Hive Guard, 4  
Tyrant Guard, 2  
Deathleaper  
(compartments variable  
to suit various combos)

### Mix & Match Trays (Custom)

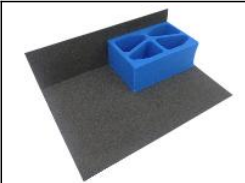
Where mix & match trays are available simply use 2 equal height sections to create 1 tray. See each section for suggestions  
70 mm deep tray compartments



#### TY4

2/3 depth tray - 70mm deep

Holds; Tyranids 3  
Warriors or Lictors  
(scything claws  
horizontal)



#### TY5

2/3 depth tray - 70mm deep

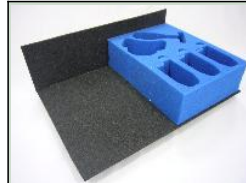
Holds; Tyranids 4  
Warriors (small weapons)  
or Lictors (scything  
claws horizontal)



#### TY6

2/3 depth tray - 70mm deep

Holds; Tyranids  
Malanthrope, Old One  
Eye



#### Suggestion:

##### TY4+TY6

2/3 depth tray - 70mm deep

Holds; Tyranids 3  
Warriors or Lictors  
(scything claws  
horizontal) plus  
Malanthrope, Old One  
Eye

# www.krmulticase.com

KR - soft foam for miniatures, hard cases for soft foam

© Copyright KaiserRushforth Ltd 2004-2016 All rights reserved, see website for details: www.krmulticase.co.uk www.krmulticase.com www.krmulticase.eu





## KR TrayGuide

Protect your army with the best tray and case system by KR  
Custom create your own trays and case for your army using the KR tray system  
Choose from the widest range of custom trays

All pictures show trays relative to a standard sized KR Multicase (1 KRU), 1 standard KR Unit

### Mix & Match Trays (Custom)

Where mix & match trays are available simply use 2 equal height sections to create 1 tray. See each section for suggestions  
110 mm deep tray compartments



#### TY7

1 depth tray - 110mm deep

Holds; Tyranids Mawloc / Trygon / Trygon Prime



#### TY8

1 depth tray - 110mm deep

Holds; Tyranids 3 Venomthrope / Red Terror / Lictors (scything claws vertical)



#### Suggestion:

#### TY7+TY8

1 depth tray - 110mm deep

Holds; Tyranids Mawloc / Trygon / Trygon Prime plus 3 Venomthrope / Red Terror / Lictors (scything claws vertical)

### Half Width Trays (Custom)

32 mm deep tray compartments



#### BU2

1/3 depth tray - 32mm deep

Holds; Holds 15x Tyranid Ripper Swarms

#### TY20-U

1/3 depth tray - 32mm deep

Holds; Tyranids Scythed Heirodule (upper tray) in TY20 tray pair. This fits over the top of the Scythed Heirodule sitting in the TY20-L tray (Note: as the total tray depth is 1 1 / 3 - a double, triple or quad aluminium case is required if you have a Scythed Heirodule)

[www.krmulticase.com](http://www.krmulticase.com)

KR - soft foam for miniatures, hard cases for soft foam

© Copyright KaiserRushforth Ltd 2004-2016 All rights reserved, see website for details: [www.krmulticase.co.uk](http://www.krmulticase.co.uk) [www.krmulticase.com](http://www.krmulticase.com) [www.krmulticase.eu](http://www.krmulticase.eu)





## KR TrayGuide

Protect your army with the best tray and case system by KR  
Custom create your own trays and case for your army using the KR tray system  
Choose from the widest range of custom trays

All pictures show trays relative to a standard sized KR Multicase (1 KRU), 1 standard KR Unit

### Half Width Trays (Custom)

51 mm deep tray compartments

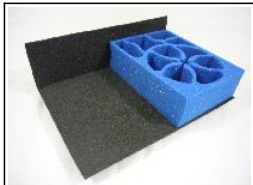


#### TY10

1/2 depth tray - 51mm  
deep  
Holds; Tyranids 10  
Gargoyles (off stands)

### Half Width Trays (Custom)

70 mm deep tray compartments



#### TY11

2/3 depth tray - 70mm  
deep  
Holds; Tyranids 10  
Gargoyles (on stands)



#### TY12

2/3 depth tray - 70mm  
deep  
Holds; Tyranids 6  
Ravener's

[www.krmulticase.com](http://www.krmulticase.com)

KR - soft foam for miniatures, hard cases for soft foam

© Copyright KaiserRushforth Ltd 2004-2016 All rights reserved, see website for details: [www.krmulticase.co.uk](http://www.krmulticase.co.uk) [www.krmulticase.com](http://www.krmulticase.com) [www.krmulticase.eu](http://www.krmulticase.eu)

putting  
figures first





## KR TrayGuide

Protect your army with the best tray and case system by KR  
Custom create your own trays and case for your army using the KR tray system  
Choose from the widest range of custom trays

All pictures show trays relative to a standard sized KR Multicase (1 KRU), 1 standard KR Unit

### Half Width Trays (Custom)

110 mm deep tray compartments



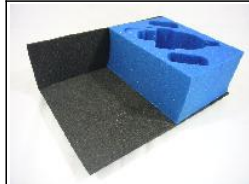
#### TY13

1 depth tray - 110mm deep  
Holds; Tyranids 2 Carnifex / Swarmlord (removable sections to suit various weapons), 1 Hive tyrant



#### TY14

1 depth tray - 110mm deep  
Holds; Tyranids Winged Hive Tyrant (incl. Scything talons) (removable wings), 1 Carnifex / Swarmlord (removable sections to suit various weapons)



#### TY17

1 depth tray - 110mm deep  
Holds; Tyranids Tyrannofex / Tervigon, plus 2 Biovore / Pyrovore / Broodlord / Hive Guard / Zoanthrope



#### TY19

1 depth tray - 110mm deep  
Holds; Tyranids 1x Barbed Heirodule

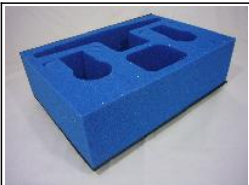


#### TY20-L

1 depth tray - 110mm deep  
Holds; Tyranids Scythed Heirodule (lower tray) in TY20 tray pair. Scythed Heirodule fits front down in this half with the TY20-U tray above it (Note: as the total tray depth is  $1 \frac{1}{3}$  - a double, triple or quad case is required if you have a Scythed Heirodule)

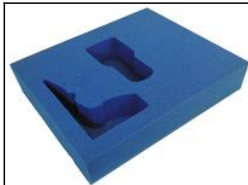
### Full Width Trays (Custom)

110 mm deep tray compartments



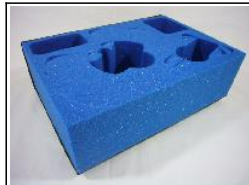
#### TY15

1 depth tray - 110mm deep  
Holds; Tyranids Forge World Winged Hive Tyrant (incl. Scything talons) (fixed wings), 2 Carnifex / Swarmlord (removable sections to suit various weapons), 1 Hive tyrant



#### TY16-U

1 depth tray - 110mm deep  
Holds; Tyranids Heirophant (lower tray) in TY16 tray pair. Heirophant fits this half with the TY16-U tray above it. To be used in conjunction with the TY16-U



#### TY18

1 depth tray - 110mm deep  
Holds; Tyranids Winged Hive Tyrant (GW), Carnifex / Swarmlord, HiveTyrant, plus 1 Biovore / Pyrovore / Broodlord / Hive Guard / Zoanthrope



#### TY21

1 depth tray - 110mm deep  
Holds; Tyranids 2x Sporocyst / 1x disassembled Tyrannocyte, 2x Biovore / Pyrovore / Broodlord / Hive Guard / Zoanthrope, 2x Mucolid Spore



#### TY22

1 depth tray - 110mm deep  
Holds; Tyranids 1x Sporocyst, 1x Biovore / Pyrovore / Broodlord / Hive Guard / Zoanthrope, 1x Mucolid Spore, 2x Carnifex

[www.krmulticase.com](http://www.krmulticase.com)

KR - soft foam for miniatures, hard cases for soft foam

© Copyright KaiserRushforth Ltd 2004-2016 All rights reserved, see website for details: [www.krmulticase.co.uk](http://www.krmulticase.co.uk) [www.krmulticase.com](http://www.krmulticase.com) [www.krmulticase.eu](http://www.krmulticase.eu)





## KR TrayGuide

Protect your army with the best tray and case system by KR  
Custom create your own trays and case for your army using the KR tray system  
Choose from the widest range of custom trays

All pictures show trays relative to a standard sized KR Multicase (1 KRU), 1 standard KR Unit

### Full Width Trays (Custom)

110 mm deep tray compartments



#### TY23-L

1 depth tray - 110mm deep

Holds; Tyranids 2x Tyrannocyte (lower tray) in TY23 tray pair. Tyrannocyte fits standing in this half with the TY23-U tray above it (Note: as the total tray depth is 2 - a double, or quad case is required if you have a Tyrannocyte)



#### TY23-U

1 depth tray - 110mm deep

Holds; Tyranids 2x Tyrannocyte (upper tray) in TY23 tray pair. This fits over the top of the Tyrannocyte sitting in the TY23-L tray (Note: as the total tray depth is 2 - a double, or quad aluminium case is required if you have a Tyrannocyte)



#### TY24-L

1 depth tray - 110mm deep

Holds; 1x Tyrannocyte (lower tray) in TY24 tray pair, 2x Carnifex, 1x Biovore / Pyrovore / Broodlord / Hive Guard / Zoanthrope, 1x Mucolid Spore, 1x Hive tyrant / Swarmlord. Tyrannocyte fits standing in this half with the TY24-U tray above it (Note: as the total tray depth is 2 - a double, or quad case is required if you have a Tyrannocyte)



#### TY24-U

1 depth tray - 110mm deep

Holds; 1x Tyrannocyte (upper tray) in TY24 tray pair, 2x Carnifex, 1x Biovore / Pyrovore / Broodlord / Hive Guard / Zoanthrope, 1x Mucolid Spore, 1x Hive tyrant / Swarmlord. This fits over the top of the Tyrannocyte sitting in the TY24-L tray (Note: as the total tray depth is 2 - a double, or quad aluminium case is required if you have a Tyrannocyte)



#### TY25-L

1 depth tray - 110mm deep

Holds; 1x Tyrannocyte (lower tray) in TY25 tray pair, 2x Carnifex, 1x Biovore / Pyrovore / Broodlord / Hive Guard / Zoanthrope, 1x Mucolid Spore, 1x Hive tyrant / Swarmlord. Tyrannocyte fits standing in this half with the TY25-U tray above it (Note: as the total tray depth is 2 - a double, or quad case is required if you have a Tyrannocyte)



#### TY25-U

1 depth tray - 110mm deep

Holds; 1x Tyrannocyte (upper tray) in TY25 tray pair, 1x Sporocyst, 2x Biovore / Pyrovore / Broodlord / Hive Guard / Zoanthrope, 2x Mucolid Spore. This fits over the top of the Tyrannocyte sitting in the TY25-L tray (Note: as the total tray depth is 2 - a double, or quad aluminium case is required if you have a Tyrannocyte)



#### TY26

1 depth tray - 110mm deep

Holds; Tyranids 2x Toxicrene / Haruspex/ Maleceptor, 2x Venomthrope / Red Terror / Lictors (scything claws vertical)



#### TY27

1 depth tray - 110mm deep

Holds; Tyranids 1x Harpy with flight stand/ Hive Crone with flight stand, 1x Stonecrusher Carnifex / Carnifex



#### TY28

1 depth tray - 110mm deep

Holds; Tyranids 1x Dimachaeron, 1x Carnifex, 2x Venomthrope / Red Terror / Lictors

[www.krmulticase.com](http://www.krmulticase.com)

KR - soft foam for miniatures, hard cases for soft foam

© Copyright KaiserRushforth Ltd 2004-2016 All rights reserved, see website for details: [www.krmulticase.co.uk](http://www.krmulticase.co.uk) [www.krmulticase.com](http://www.krmulticase.com) [www.krmulticase.eu](http://www.krmulticase.eu)





## KR TrayGuide

Protect your army with the best tray and case system by KR  
Custom create your own trays and case for your army using the KR tray system  
Choose from the widest range of custom trays

All pictures show trays relative to a standard sized KR Multicase (1 KRU), 1 standard KR Unit

### Full Width Trays (Custom)

mm deep tray compartments



#### TY16-L

2 depth tray - mm deep  
Holds; Tyranids  
Heirophant (lower tray) in  
TY16 tray pair.  
Heirophant fits this half  
with the TY16-U tray  
above it. To be used in  
conjunction with the  
TY16-U

### Oversized Width Trays (Custom)

mm deep tray compartments



#### TY16

depth tray - mm deep  
Holds; Tyranids  
Heirophant (contact us  
via email -  
sales@krmulticase.co.uk  
to arrange for the  
additional case worth of  
trays which fit in to carry  
vehicles or troops)



#### TY20

depth tray - mm deep  
Holds; Tyranids 1x  
Scythed Heirodule sits in  
the lower tray with the  
upper tray forming a  
clamshell style top (Note:  
as the total tray depth is  
1 1 / 3 - a double, triple  
or quad aluminium case  
is required if you have a  
Scythed Heirodule)



#### TY23

depth tray - mm deep  
Holds; Tyranids 2x  
Assembled Tyrannocyte,  
2x Biovore / Pyrovore /  
Broodlord / Hive Guard /  
Zoanthrope, 2x Mucolid  
Spore (Note: as the total  
tray depth is 2 - a  
double, or quad  
aluminium case is  
required if you have a  
Tyrannocyte)



#### TY24

depth tray - mm deep  
Holds; Tyranids 1x  
Assembled Tyrannocyte,  
2x Biovore / Pyrovore /  
Broodlord / Hive Guard /  
Zoanthrope, 2x Mucolid  
Spore, 4x Carnifex, 2  
Hive tyrant / Swarmlord  
(Note: as the total tray  
depth is 2 - a double, or  
quad aluminium case is  
required if you have a  
Tyrannocyte)



#### TY25

depth tray - mm deep  
Holds; Tyranids 1x  
Assembled Tyrannocyte,  
3x Biovore / Pyrovore /  
Broodlord / Hive Guard /  
Zoanthrope, 3x Mucolid  
Spore, 2x Carnifex, 1x  
Hive tyrant / Swarmlord,  
1x Sporocyst (Note: as  
the total tray depth is 2 -  
a double, or quad  
aluminium case is  
required if you have a  
Tyrannocyte)

[www.krmulticase.com](http://www.krmulticase.com)

KR - soft foam for miniatures, hard cases for soft foam

© Copyright KaiserRushforth Ltd 2004-2016 All rights reserved, see website for details: [www.krmulticase.co.uk](http://www.krmulticase.co.uk) [www.krmulticase.com](http://www.krmulticase.com) [www.krmulticase.eu](http://www.krmulticase.eu)





## KR TrayGuide

Protect your army with the best tray and case system by KR  
Custom create your own trays and case for your army using the KR tray system  
Choose from the widest range of custom trays

All pictures show trays relative to a standard sized KR Multicase (1 KRU), 1 standard KR Unit

### Pick & Pluck

Note: Pick & Pluck trays require some modelling skills to create compartments to suit figures, vehicles, etc  
32 mm deep tray compartments



#### D3H

1/3 depth tray - 32mm deep  
Holds; Tyranids 15x Ripper Swarms

### Pick & Pluck

Note: Pick & Pluck trays require some modelling skills to create compartments to suit figures, vehicles, etc  
51 mm deep tray compartments



#### D2H

1/2 depth tray - 51mm deep  
Holds; Tyranids 10 Hive Guard / Tyrant Guard / Broodlord



#### D2H

1/2 depth tray - 51mm deep  
Holds; Tyranids 5 Death leaper / Zoanthrope



#### D2H

1/2 depth tray - 51mm deep  
Holds; Tyranids 2 Venomthrope



#### J2H

1/2 depth tray - 51mm deep  
Holds; Tyranids 8 Gargoyles (off stands)



#### V2H

1/2 depth tray - 51mm deep  
Holds; Tyranids 6 Lictors / Warriors / Raveners / Gargoyles/ 12x Micotic Spore Sacks



#### V2H

1/2 depth tray - 51mm deep  
Holds; Tyranids 4 Biovore

[www.krmulticase.com](http://www.krmulticase.com)

KR - soft foam for miniatures, hard cases for soft foam

© Copyright KaiserRushforth Ltd 2004-2016 All rights reserved, see website for details: [www.krmulticase.co.uk](http://www.krmulticase.co.uk) [www.krmulticase.com](http://www.krmulticase.com) [www.krmulticase.eu](http://www.krmulticase.eu)







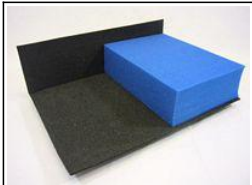
## KR TrayGuide

Protect your army with the best tray and case system by KR  
Custom create your own trays and case for your army using the KR tray system  
Choose from the widest range of custom trays

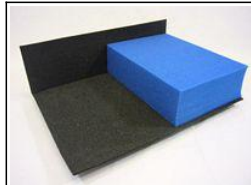
All pictures show trays relative to a standard sized KR Multicase (1 KRU), 1 standard KR Unit

### Pick & Pluck

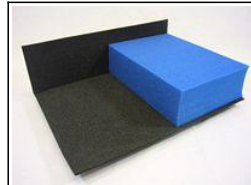
Note: Pick & Pluck trays require some modelling skills to create compartments to suit figures, vehicles, etc  
70 mm deep tray compartments



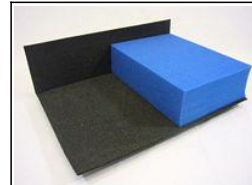
**J5H**  
2/3 depth tray - 70mm deep  
Holds; Tyranids 8  
Gargoyles (on stands) 8  
Skyslasher Swarms/ 10  
Ravenors



**V5H**  
2/3 depth tray - 70mm deep  
Holds; Tyranids 4x  
Malanthropes



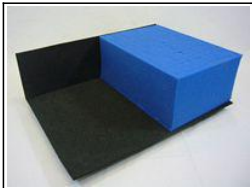
**V5H**  
2/3 depth tray - 70mm deep  
Holds; Tyranids 4  
Pyrovore / Red Terror



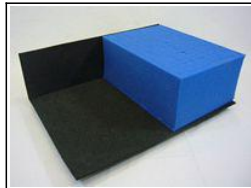
**V5H**  
2/3 depth tray - 70mm deep  
Holds; Tyranids 6  
Ravenors

### Pick & Pluck

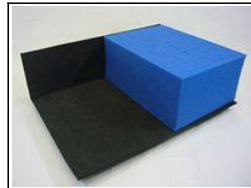
Note: Pick & Pluck trays require some modelling skills to create compartments to suit figures, vehicles, etc  
110 mm deep tray compartments



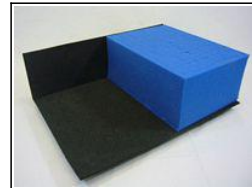
**V1H**  
1 depth tray - 110mm deep  
Holds; Tyranids 2  
Carnifex / Swarmlord /  
Stonecrusher Carnifex/  
Old One Eye, 1 Hive  
tyrant



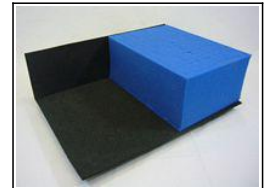
**V1H**  
1 depth tray - 110mm deep  
Holds; Tyranids 2  
Carnifex / Swarmlord, 1  
Hive tyrant



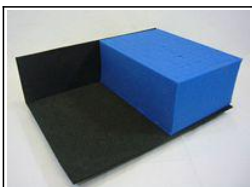
**V1H**  
1 depth tray - 110mm deep  
Holds; Tyranids  
Tyrannofex / Tervigon



**V1H**  
1 depth tray - 110mm deep  
Holds; Tyranids 1  
Tyrannofex / Hive Tyrant  
/ Tervigon / Swarmlord



**V1H**  
1 depth tray - 110mm deep  
Holds; Tyranids 4  
Carnifex / Swarmlord /  
Hive tyrant / Old One Eye



**V1H**  
1 depth tray - 110mm deep  
Holds; Tyranids 2 Trygon  
/ Mawloc/ Harridan/  
Scythed Hierodule



**V1T**  
1 depth tray - 110mm deep  
Holds; Tyranids 1x  
Dimachaeron



**V1T**  
1 depth tray - 110mm deep  
Holds; Tyranids Winged  
Hive Tyrant (GW or FW),  
Carnifex, HiveTyrant



**V1T**  
1 depth tray - 110mm deep  
Holds; Tyranids 2x  
Sporocyst / 1x  
disassembled  
Tyrannocyte



**V1T**  
1 depth tray - 110mm deep  
Holds; Tyranids 2x  
Toxicrene / Exocrine /  
Haruspex / Maleceptor

[www.krmulticase.com](http://www.krmulticase.com)

KR - soft foam for miniatures, hard cases for soft foam

© Copyright KaiserRushforth Ltd 2004-2016 All rights reserved, see website for details: [www.krmulticase.co.uk](http://www.krmulticase.co.uk) [www.krmulticase.com](http://www.krmulticase.com) [www.krmulticase.eu](http://www.krmulticase.eu)





## KR TrayGuide

Protect your army with the best tray and case system by KR  
Custom create your own trays and case for your army using the KR tray system  
Choose from the widest range of custom trays

All pictures show trays relative to a standard sized KR Multicase (1 KRU), 1 standard KR Unit

### Pick & Pluck

Note: Pick & Pluck trays require some modelling skills to create compartments to suit figures, vehicles, etc  
110 mm deep tray compartments



#### VIT

1 depth tray - 110mm deep  
Holds; Tyranids 1x Harpy with flight stand



#### VIT

1 depth tray - 110mm deep  
Holds; Tyranids 1x Dimachaeron

### Half Width Troop Trays

23 mm deep tray compartments



#### F4H

1/4 depth tray - 23mm deep  
Holds; Tyranids 18 Hormagaunts / Termagants / Spore mines

### Half Width Troop Trays

32 mm deep tray compartments



#### F3H

1/3 depth tray - 32mm deep  
Holds; Tyranids 18 Genestealers / Hormagaunts / Termagants / Spore mines

[www.krmulticase.com](http://www.krmulticase.com)

KR - soft foam for miniatures, hard cases for soft foam

© Copyright KaiserRushforth Ltd 2004-2016 All rights reserved, see website for details: [www.krmulticase.co.uk](http://www.krmulticase.co.uk) [www.krmulticase.com](http://www.krmulticase.com) [www.krmulticase.eu](http://www.krmulticase.eu)

putting  
figures first



## KR TrayGuide

Protect your army with the best tray and case system by KR  
Custom create your own trays and case for your army using the KR tray system  
Choose from the widest range of custom trays

All pictures show trays relative to a standard sized KR Multicase (1 KRU), 1 standard KR Unit

### Full Width Troop Trays

23 mm deep tray compartments



#### F4T

1/4 depth tray - 23mm  
deep  
Holds; Tyranids 36  
Hormagaunts /  
Termagants / Spore  
mines

### Full Width Troop Trays

32 mm deep tray compartments



#### F3T

1/3 depth tray - 32mm  
deep  
Holds; Tyranids 36  
Genestealers /  
Hormagaunts /  
Termagants / Spore  
mines

[www.krmulticase.com](http://www.krmulticase.com)

KR - soft foam for miniatures, hard cases for soft foam

© Copyright KaiserRushforth Ltd 2004-2016 All rights reserved, see website for details: [www.krmulticase.co.uk](http://www.krmulticase.co.uk) [www.krmulticase.com](http://www.krmulticase.com) [www.krmulticase.eu](http://www.krmulticase.eu)

putting  
figures first