



## KR TrayGuide

Protect your army with the best tray and case system by KR  
Custom create your own trays and case for your army using the KR tray system  
Choose from the widest range of custom trays

All pictures show trays relative to a standard sized KR Multicase (1 KRU), 1 standard KR Unit  
Pre-selected Sets (Custom)

### STAR-SV-A

0.5 KRU  
Scum & Villainy set A  
holds:  
10x Fighters (Y-Wing, Z-95, M3-A Interceptor), Ship cards, Damage cards, Upgrade cards, Manoeuvre templates, Mission and Obstacle tokens, up to 10 Manoeuvre dials, Dice, Ship tokens, Action tokens, Shield tokens, Stress tokens, Critical hit tokens, ID tokens  
(largest Manoeuvre template sits on top of the top tray) - Rulebook will fit on top of trays inside the case.  
(XW1, XW2, XW3)

### STAR-SV-B

1 KRU  
Scum & Villainy set B  
holds:  
Lambda Shuttle, and 2-3 Firespray-31, Stands, 4x Fighters (HWK-290, Y-Wing, Z-95, M3-A Interceptor), 13x Fighters (Y-Wing, Z-95, M3-A Interceptor), Ship cards, Damage cards, Upgrade cards, Manoeuvre templates, Mission and Obstacle tokens, up to 10 Manoeuvre dials, Dice, Ship tokens, Action tokens, Shield tokens, Stress tokens, Critical hit tokens, ID tokens  
(largest Manoeuvre template sits on top of the top tray) - Rulebook will fit on top of trays inside the case.  
(XW1, XW2, XW3, XW6, XW7)

### Mix & Match Trays (Custom)

Where mix & match trays are available simply use 2 equal height sections to create 1 tray. See each section for suggestions  
51 mm deep tray compartments



#### XW53

1/2 depth tray - 51mm deep  
Holds; 3x HWK-290 (or X-Wing, Y-Wing, A-Wing, E-Wing, Z-95 Headhunter, Tie fighter, Tie Advanced, Tie Interceptor, Tie Bomber)



#### XW54

1/2 depth tray - 51mm deep  
Holds; 4x Fighters on stands (fits all fighters, except HWK-290)



#### XW60

1/2 depth tray - 51mm deep  
Holds; 2 compartments for Card Sets / Stands / Dice / Tokens etc. (holds 2 XW61 / XW63 / XW65 inserts if desired, these are available separately).



#### XW62

1/2 depth tray - 51mm deep  
Holds; 2x Firespray-31 / Slave One



#### XW64

1/2 depth tray - 51mm deep  
Holds; 2x IG-2000 Aggressor

[www.krmulticase.com](http://www.krmulticase.com)

KR - soft foam for miniatures, hard cases for soft foam



## KR TrayGuide

Protect your army with the best tray and case system by KR  
Custom create your own trays and case for your army using the KR tray system  
Choose from the widest range of custom trays

All pictures show trays relative to a standard sized KR Multicase (1 KRU), 1 standard KR Unit

### Mix & Match Trays (Custom)

Where mix & match trays are available simply use 2 equal height sections to create 1 tray. See each section for suggestions  
51 mm deep tray compartments



#### Suggestion:

**XW54+XW60**

1/2 depth tray - 51mm deep

Holds; 4x Fighters on stands (fits standard fighters, except HWK-290) plus 2 compartments for Card Sets / Stands / Dice / Tokens etc. (the 2 extra compartments can hold 2 XW61 / XW63 / XW65 inserts if desired, these are available separately).

### Half Width Trays (Custom)

23 mm deep tray compartments



#### XW1

1/4 depth tray - 23mm deep

Holds; Ship cards, Damage cards, Upgrade cards, Manoeuvre templates, Mission and Obstacle tokens (largest Manoeuvre template sits on top of the top tray)



#### XW1

1/4 depth tray - 23mm deep

Holds; Ship cards, Damage cards, Upgrade cards, Manoeuvre templates, Mission and Obstacle tokens (largest Manoeuvre template sits on top of the top tray)



#### XW2

1/4 depth tray - 23mm deep

Holds; Up to 10 Manoeuvre dials, Dice, Ship tokens, Action tokens, Shield tokens, Stress tokens, Critical hit tokens, ID tokens



#### XW2

1/4 depth tray - 23mm deep

Holds; Up to 10 Manoeuvre dials, Dice, Ship tokens, Action tokens, Shield tokens, Stress tokens, Critical hit tokens, ID tokens



#### XW15

1/4 depth tray - 23mm deep

Holds; 30 Manoeuvre dials or Ship tokens

[www.krmulticase.com](http://www.krmulticase.com)

KR - soft foam for miniatures, hard cases for soft foam

© Copyright KaiserRushforth Ltd 2004-2016 All rights reserved, see website for details: [www.krmulticase.co.uk](http://www.krmulticase.co.uk) [www.krmulticase.com](http://www.krmulticase.com) [www.krmulticase.eu](http://www.krmulticase.eu)





## KR TrayGuide

Protect your army with the best tray and case system by KR  
Custom create your own trays and case for your army using the KR tray system  
Choose from the widest range of custom trays

All pictures show trays relative to a standard sized KR Multicase (1 KRU), 1 standard KR Unit

### Half Width Trays (Custom)

51 mm deep tray compartments



#### XW3

1/2 depth tray - 51mm deep

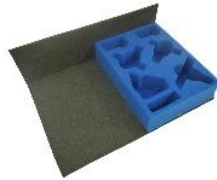
Holds; 10x Fighters on stands (X-Wing, Y-Wing, A-Wing, E-Wing, Z-95 Headhunter, Tie fighter, Tie Advanced, Tie Interceptor, Tie Bomber) (Excluding B-Wing, Starvipers and HWK290)



#### XW3

1/2 depth tray - 51mm deep

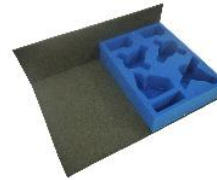
Holds; 10x Fighters (Y-Wing, Z-95, M3-A Interceptor)



#### XW6

1/2 depth tray - 51mm deep

Holds; Lambda Shuttle, and 2-3 Firespray-31, Stands, Damage cards, Upgrade cards, Manoeuvre templates, Tokens (Note reduced space for stands and cards if third Firespray compartment is used)



#### XW6

1/2 depth tray - 51mm deep

Holds; Lambda Shuttle, and 2-3 Firesprays, Stands, Damage cards, Upgrade cards, Manoeuvre templates, Tokens (Note reduced space for stands and cards if third Firespray compartment is used)



#### XW7

1/2 depth tray - 51mm deep

Holds; 4x HWK-290 / Fighters on stands (X-Wing, Y-Wing, A-Wing, E-Wing, Z-95 Headhunter, Tie fighter, Tie Advanced, Tie Interceptor, Tie Bomber) (Excluding larger fighters like B-Wing and Starviper), plus 3x Fighters on stands (X-Wing, Y-Wing, A-Wing, E-Wing, Z-95 Headhunter, Tie fighter, Tie Advanced, Tie Interceptor, Tie Bomber) (Excluding B-Wing and Starviper)



#### XW7

1/2 depth tray - 51mm deep

Holds; 4x Fighters (HWK-290, Y-Wing, Z-95, M3-A Interceptor), 3x Fighters (Y-Wing, Z-95, M3-A Interceptor)



#### XW16

1/2 depth tray - 51mm deep

Holds; 8x Fighters on stands (fits all fighters, except HWK-290)



#### XW19

1/2 depth tray - 51mm deep

Holds; 1x Hounds Tooth, 1x Firespray-31 / Slave One, 2x Fighters on stands (fits all fighters, except HWK-290)



#### XW19

1/2 depth tray - 51mm deep

Holds; 1x Hounds Tooth, 1x Firespray-31 / Slave One, 2x Fighters on stands (fits all fighters, except HWK-290)



#### XW21

1/2 depth tray - 51mm deep

Holds; 1x Ghost, 1x Punishing One, Stands, 1x Fighter (will fit Ghost Scout Shuttle)

[www.krmulticase.com](http://www.krmulticase.com)

KR - soft foam for miniatures, hard cases for soft foam

© Copyright KaiserRushforth Ltd 2004-2016 All rights reserved, see website for details: [www.krmulticase.co.uk](http://www.krmulticase.co.uk) [www.krmulticase.com](http://www.krmulticase.com) [www.krmulticase.eu](http://www.krmulticase.eu)





## KR TrayGuide

Protect your army with the best tray and case system by KR  
Custom create your own trays and case for your army using the KR tray system  
Choose from the widest range of custom trays

All pictures show trays relative to a standard sized KR Multicase (1 KRU), 1 standard KR Unit

### Half Width Trays (Custom)

51 mm deep tray compartments



#### XW22

1/2 depth tray - 51mm deep

Holds; 2x Medium sized ships / Fighters on Stands (fits Mist Hunter, K-Wing, TIE Punisher, HWK-290, Tie Silencer, Scurrg-H-6, Imperial Alpha Class, M12-L Kimogila or any fighter,), 4x Fighters on stands (fits all fighters, except HWK-290)



#### XW23

1/2 depth tray - 51mm deep

Holds; 1x Shadowcaster, 3x Fighters on stands, base



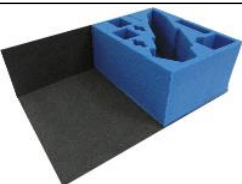
#### XW24

1/2 depth tray - 51mm deep

Holds; 1x Upsilon, 2x HWK-290 (or X-Wing, Y-Wing, A-Wing, E-Wing, Z-95 Headhunter, Tie fighter, Tie Advanced, Tie Interceptor, Tie Bomber, Tie Striker), 1x Fighter, Cards, Base

### Half Width Trays (Custom)

110 mm deep tray compartments



#### XW25

1 depth tray - 110mm deep

Holds; 1x C-ROC Cruiser, Cards, Bases, Stands, Fighter on stand plus (Medium sized ship / Fighter on Stands (fits Mist Hunter, K-Wing, TIE Punisher, HWK-290, or any fighter), Fighter on stand (fits all fighters, except HWK-290)

[www.krmulticase.com](http://www.krmulticase.com)

KR - soft foam for miniatures, hard cases for soft foam

© Copyright KaiserRushforth Ltd 2004-2016 All rights reserved, see website for details: [www.krmulticase.co.uk](http://www.krmulticase.co.uk) [www.krmulticase.com](http://www.krmulticase.com) [www.krmulticase.eu](http://www.krmulticase.eu)

putting  
figures first

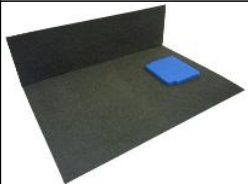


## KR TrayGuide

Protect your army with the best tray and case system by KR  
Custom create your own trays and case for your army using the KR tray system  
Choose from the widest range of custom trays

All pictures show trays relative to a standard sized KR Multicase (1 KRU), 1 standard KR Unit

### Oversized Width Trays (Custom) mm deep tray compartments



#### XW61

depth tray - mm deep  
Holds; Separator pad for XW60 to separate cards/stands etc.



#### XW63

depth tray - mm deep  
Holds; Firespray-31 / Slave One (Insert fits into the XW60 tray)



#### XW65

depth tray - mm deep  
Holds; IG-2000 Aggressor (Insert fits into the XW60 tray)



#### XW69

depth tray - mm deep  
Holds; Punishing One (Insert fits into the XW60 tray)



#### XW71

depth tray - mm deep  
Holds; U-Wing (Insert fits into the XW60 tray)

### Half Width Troop Trays 51 mm deep tray compartments



#### N2H

1/2 depth tray - 51mm deep  
Holds; 40 Manoeuvre dials or Ship tokens

[www.krmulticase.com](http://www.krmulticase.com)

KR - soft foam for miniatures, hard cases for soft foam

© Copyright KaiserRushforth Ltd 2004-2016 All rights reserved, see website for details: [www.krmulticase.co.uk](http://www.krmulticase.co.uk) [www.krmulticase.com](http://www.krmulticase.com) [www.krmulticase.eu](http://www.krmulticase.eu)

